



What You Can Do To Reduce Air Toxics

Organize or Join an Existing Local Organization, such as Community In-Power and Development Association, Inc.

- Hold regular meetings and bring in speakers to talk about different issues, such as the Air Exchange created by the Galveston-Houston Association for Smog Prevention and Mother's for Clean Air

Find Out More About What's Going On In Your Community

- Conduct a health survey in industrial neighborhoods
- Record a pollution log, keeping track of industrial upset events and immediate health effects
- Request a cancer or birth defect study from the Department of State Health Service, such as the Nueces County birth defect study conducted for the local group Citizens for Environmental Justice

Make Your Voice Heard

- Write letters to the editor and opinion-editorials about timely issues
- Meet with your local policy makers

Clean Up Dirty Diesels

- Meet with your local school board and policy makers to see if there are ways to retrofit dirty diesel school buses and city transit buses – hold a school Retro-fit party to raise \$

Important Numbers

EPA Air Risk Hotline, 919-541-0888, for guidance on matters about health, exposure, and risk assessment of toxic air pollutants

EPA Emergency Hotline, 1-800-424-8802

Local Emergency Planning Committee (LEPC), 409-722-4371, for information on emergency planning for and public awareness of potential hazardous chemical substances, <http://www.jeffcolepc.org/>

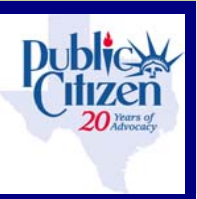
Pollution Response System, 1-800-368-7229, to report pollution in Galveston Bay and in Brazoria, Chambers, Harris, Galveston, and Liberty Counties

Texas Commission on Environmental Quality – Region 10, 409-898-3838, to report water pollution, land contamination, and air pollution in counties: Angelina, Hardin, Houston, Jasper, Jefferson, Nacogdoches, Newton, Orange, Polk, Sabine, San Augustine, San Jacinto, Shelby, Trinity, Tyler

Texas Commission on Environmental Quality – Region 12, 713-767-3712, to report water pollution, land contamination, and air pollution in Harris County and the surrounding 13 counties

Texas Commission on Environmental Quality Complaint Hotline, 1-888-777-3186

Texas Smoking Vehicle Program Hotline, 1-800-453-7664, to report polluting vehicles by license number



1002 West Ave. • Austin, TX 78701 • (512) 477-1155 • www.citizen.org/Texas
Funded in part by the Clean Air Task Force and the Houston Endowment



Air Toxics: What you don't know CAN hurt you

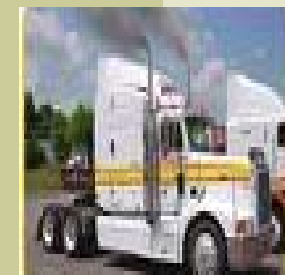


What are Air Toxics?

Air Toxics are the 188 hazardous air pollutants (HAPs) identified by the 1990 federal Clean Air Act amendments as pollutants known or suspected to cause cancer or other serious health effects.



Air Toxics are known or suspected to contribute to various cancers, such as leukemia, as well as birth defects, reproductive and developmental problems, immune system disorders, and respiratory and neurological diseases.



We cross paths with air toxics everyday; they are a harmful byproduct of our modern society. The major sources of air toxics are industrial facilities, such as refineries that produce our gasoline and fossil-fueled power plants that make our electricity.



Transportation and construction equipment are also large sources of hazardous air pollution. Long-haul trucks, tractors, buses, trains, and boats all spew diesel particulate matter that is a toxic soup made up of 40 air toxics, including 15 carcinogens.

We can live in our modern world without being poisoned from air toxics. Solutions exist that will significantly reduce the public's exposure to hazardous pollutants. Decision-makers must require these solutions are put in place, while citizens must hold the decision-makers accountable and industries need to act in a socially responsible manner.

Jefferson County Region & Air Toxics

Jefferson County Fast Facts, Compared to ALL U.S. Counties

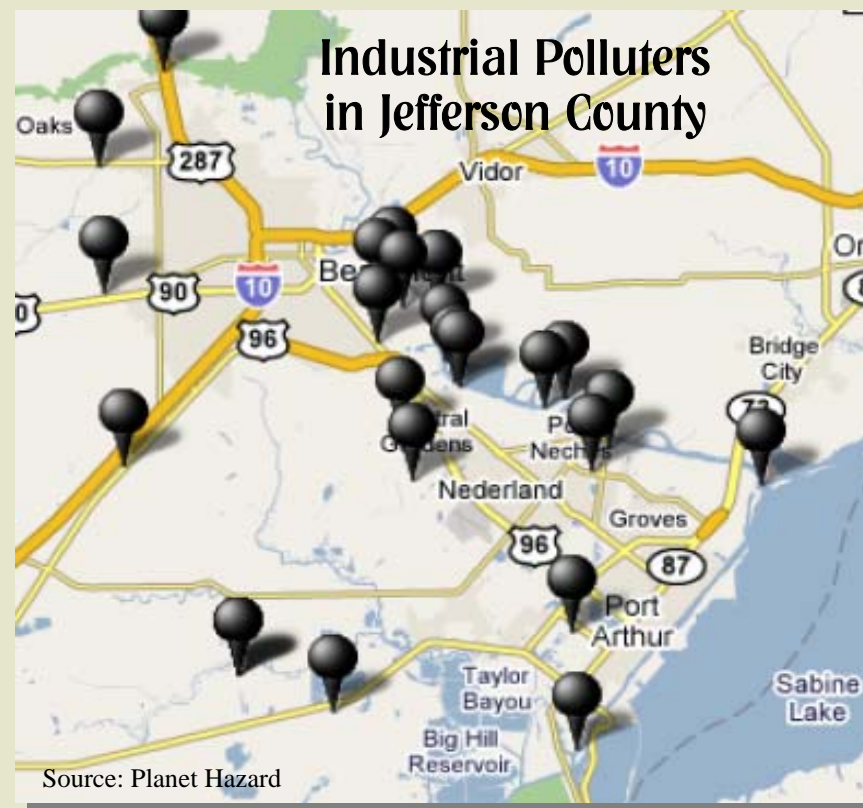
- 5th** — for the largest amount of air & water releases of **carcinogens**
- 8th** — for the largest amount of air & water releases of brain-damaging **neurotoxicants**
- 8th** — for the largest amount of air & water releases of **developmental toxicants**
- 8th** — for the largest amount of air & water releases of **reproductive toxicants**
- 29th** — for the largest amount of air releases of **respiratory toxicants**

Source: US EPA 2004 Toxic Release Inventory data, analysis by US PIRG in "Toxic Pollution and Your Health," March 2007.

Jefferson, Liberty, Hardin, and Orange Counties ALL have statistically significantly higher hospital admission rates for **Chronic Obstructive Pulmonary Disease** when compared to the state.

Liberty County also has statistically significantly higher hospital admission rates for **Adult and Pediatric Asthma** when compared to the state.

Source: Department of State Health Services. Texas Inpatient Hospital Discharge Data, 2002.



Jefferson County has statistically significantly higher incidence rates for all cancer sites combined in males when compared to the State of Texas.

Liberty County ranks 3rd in the state for counties with the highest incidence & death rates of Lung & Bronchus cancers.

Source: DSHS Texas Cancer Registry and National Cancer Institute



Source: Sierra Club



Air Toxics From Diesel Exhaust

Texas Consumes More Diesel Fuel Than Any Other State to Power:

- On-Road Diesel Engines**
- Light & Heavy Duty Trucks
 - City Transit Buses
 - Passenger Cars
 - School Buses



- Off-Road Diesel Engines**
- Construction & Farm Equipment
 - Prime & Standby Engines
 - Marine Vessels
 - Trains

Diesel particulate matter (DPM), otherwise known as soot, is the most deadly component of diesel exhaust.

DPM causes severe health problems because it is tiny, emitted at ground level, and impossible to avoid. The average human hair is 30 times larger than the largest fine particle - PM 2.5. These tiny particles pass easily through the throat and nose and into the lung tissue and bloodstream, carrying toxic substances with them.

The average lifetime diesel soot cancer risk for a resident of Jefferson County is 1 in 1,157.
This risk is 865 times greater than EPA's acceptable cancer level of 1 in 1 million.

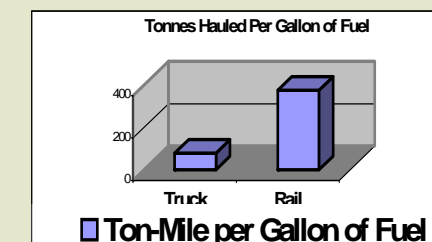
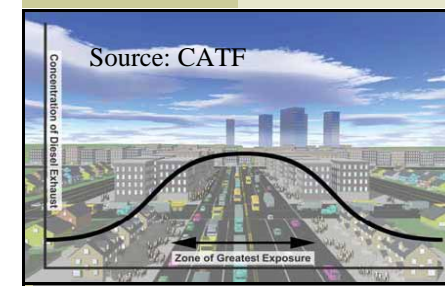
How Jefferson County Ranks Statewide & Nationally in Health Impacts from Diesel Fine Particles, 1999

NOTE: higher ranking = less healthy air

(Source: Clean Air Task Force, CATF)

Rank Compared to the 254 TX Counties	Rank Compared to the 3,109 U.S. Counties	County	Deaths	Non-Fatal Heart Attacks	Asthma Attacks	Chronic Bronchitis	Work Loss Days	Times Above EPA's Acceptable Cancer Level
1	14	Jefferson	59	58	1,029	29	5,863	865 X
2	17	Harris	295	368	9,791	250	57,645	742 X
5	102	Dallas	106	130	3,263	85	19,550	398 X
12	249	Travis	22	32	868	23	5,620	299 X
16	431	Bexar	50	62	1,313	35	7,467	257 X
51	1,382	El Paso	11	16	374	9	2,007	143 X

Daily ship and truck traffic traveling in and out of the refineries, plants, and ports makes the Beaumont-Port Arthur area a breeding ground for diesel pollution. Fortunately, there are options to reduce exposure to these concentrated and harmful emissions. The first chart shows how DPM peaks in densely populated areas. The second chart shows how trucks are less fuel efficient than trains, making trains a better option for hauling the freight in and out of the facilities. In the photograph, the tractor on the left is retrofitted with a diesel particulate filter (DPF). DPFs can be up to 90% effective in removing DPM from the exhaust stream. Ultra-low sulfur diesel fuel in conjunction with DPFs on trucks, buses, tug boats, ferries and heavy construction equipment is the best way to remove particle pollution from the millions of existing diesel engines.



Source: Bureau of Transportation Statistics

