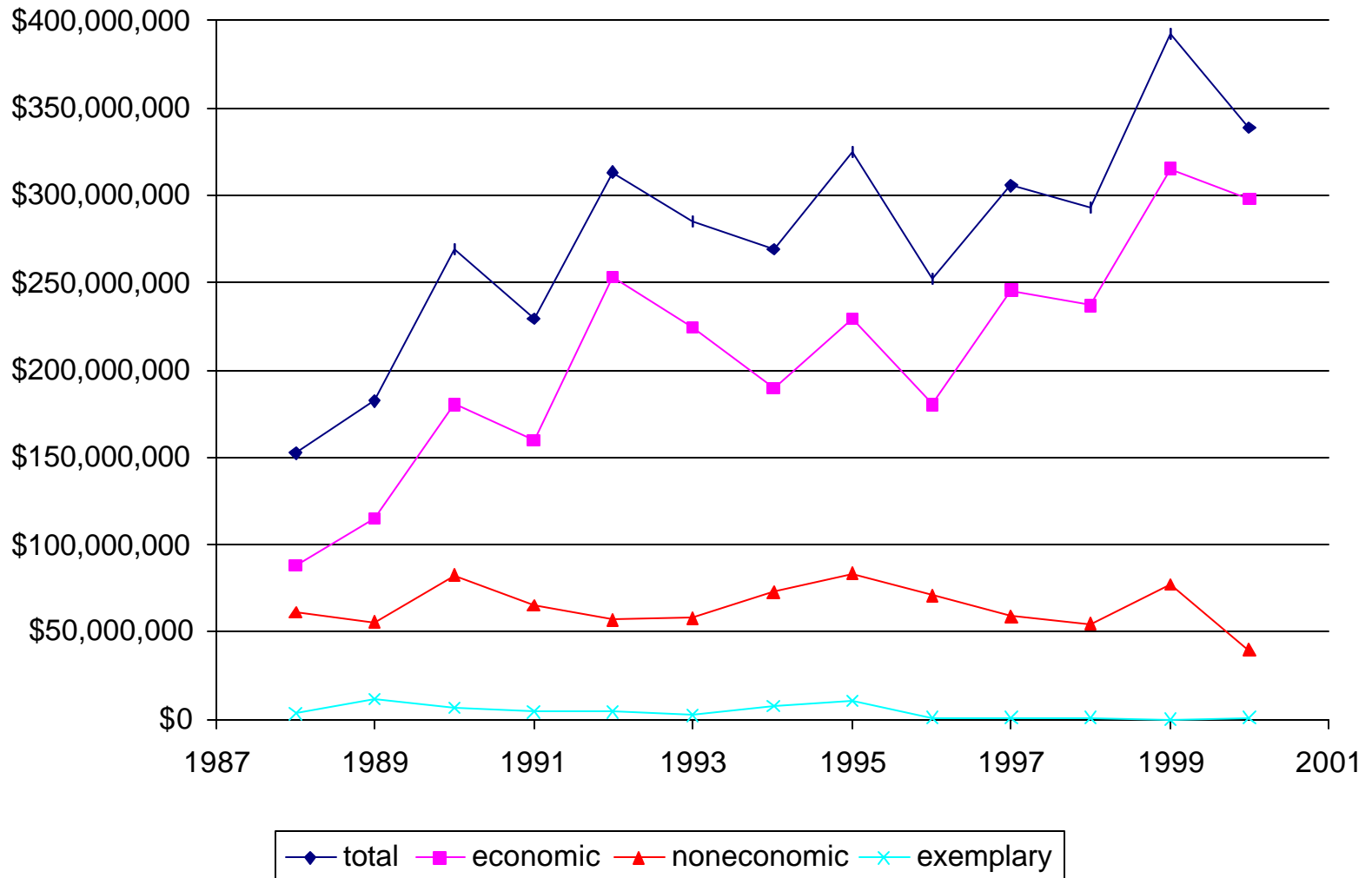


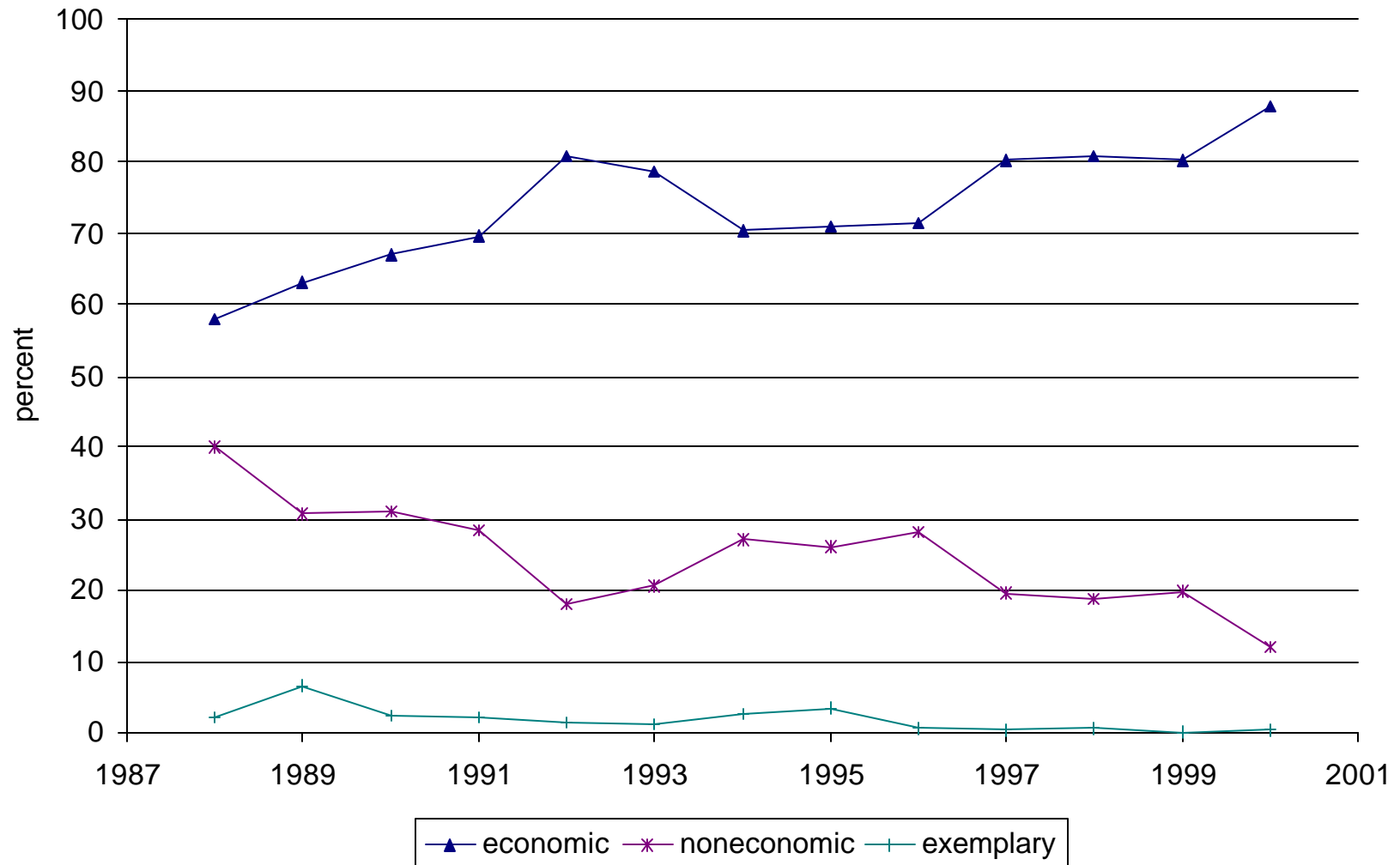
### Payouts by Category

Source: Texas Department of Insurance Closed Claims Data (1988-2000)



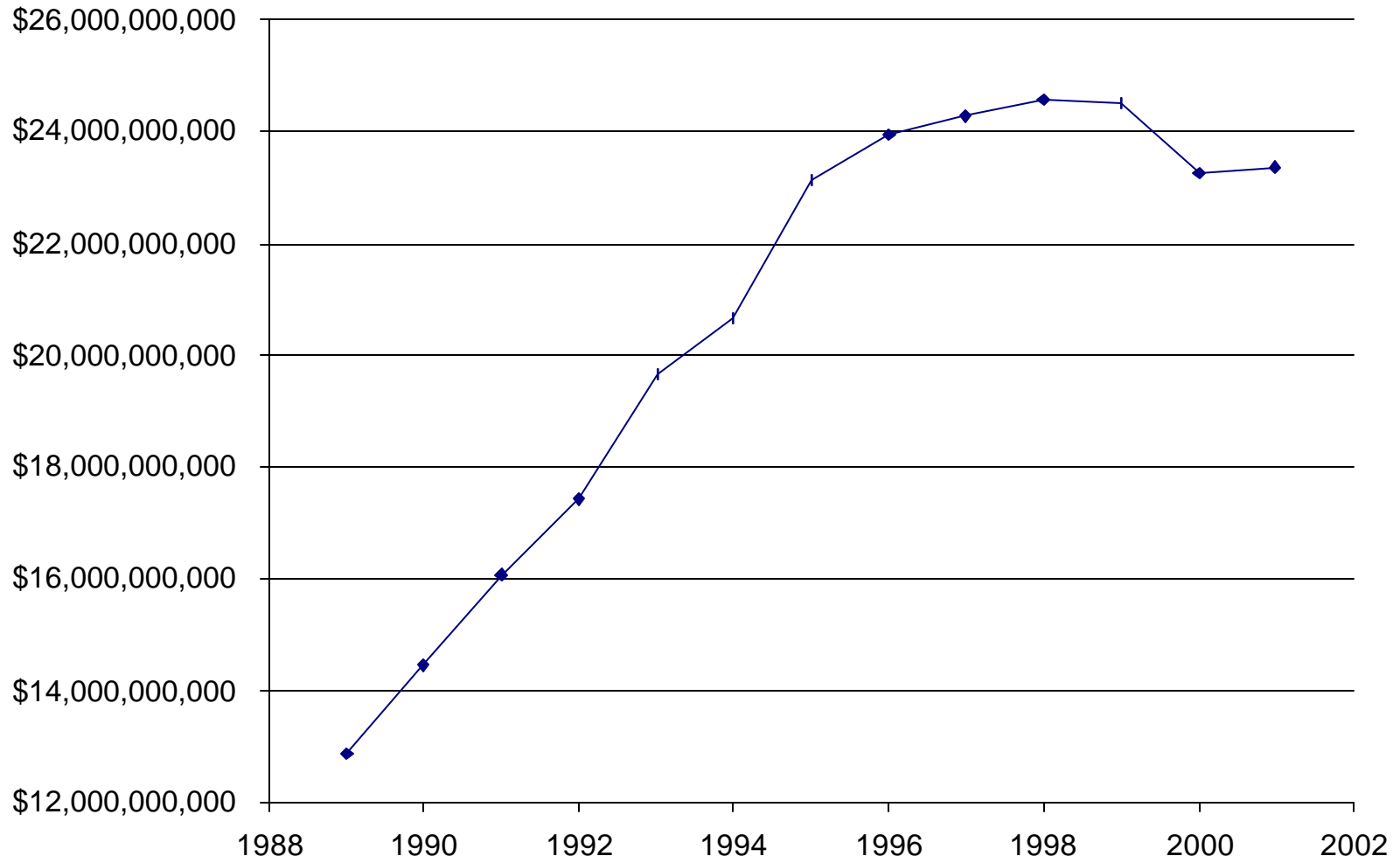
### Percent of Payouts by Category

Source: Texas Department of Insurance Closed Claims Data (1988-2000)



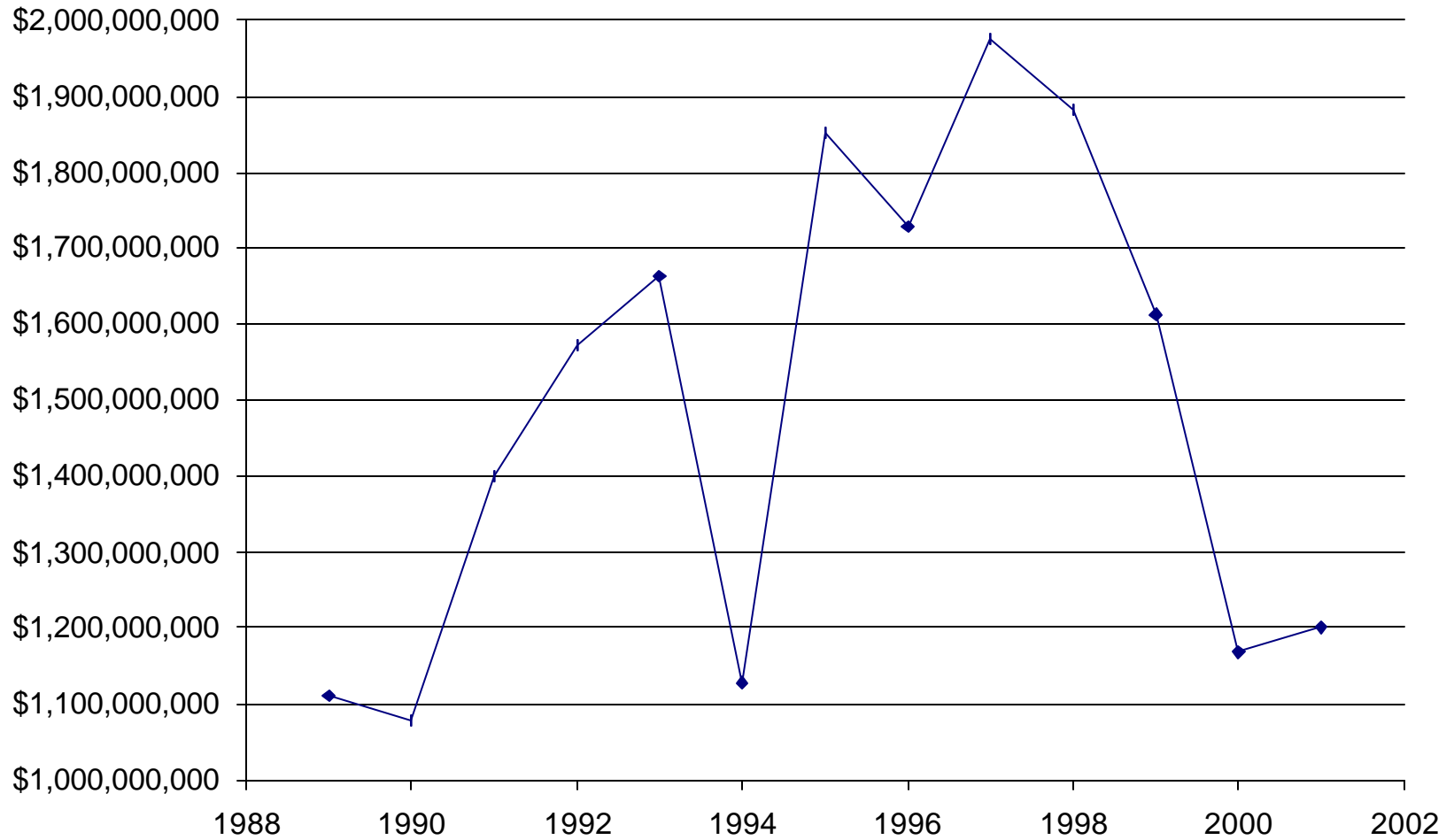
### Total Invested Assets

Source: Texas Department of Insurance Report to House Civil Practices Committee, 2/12/03



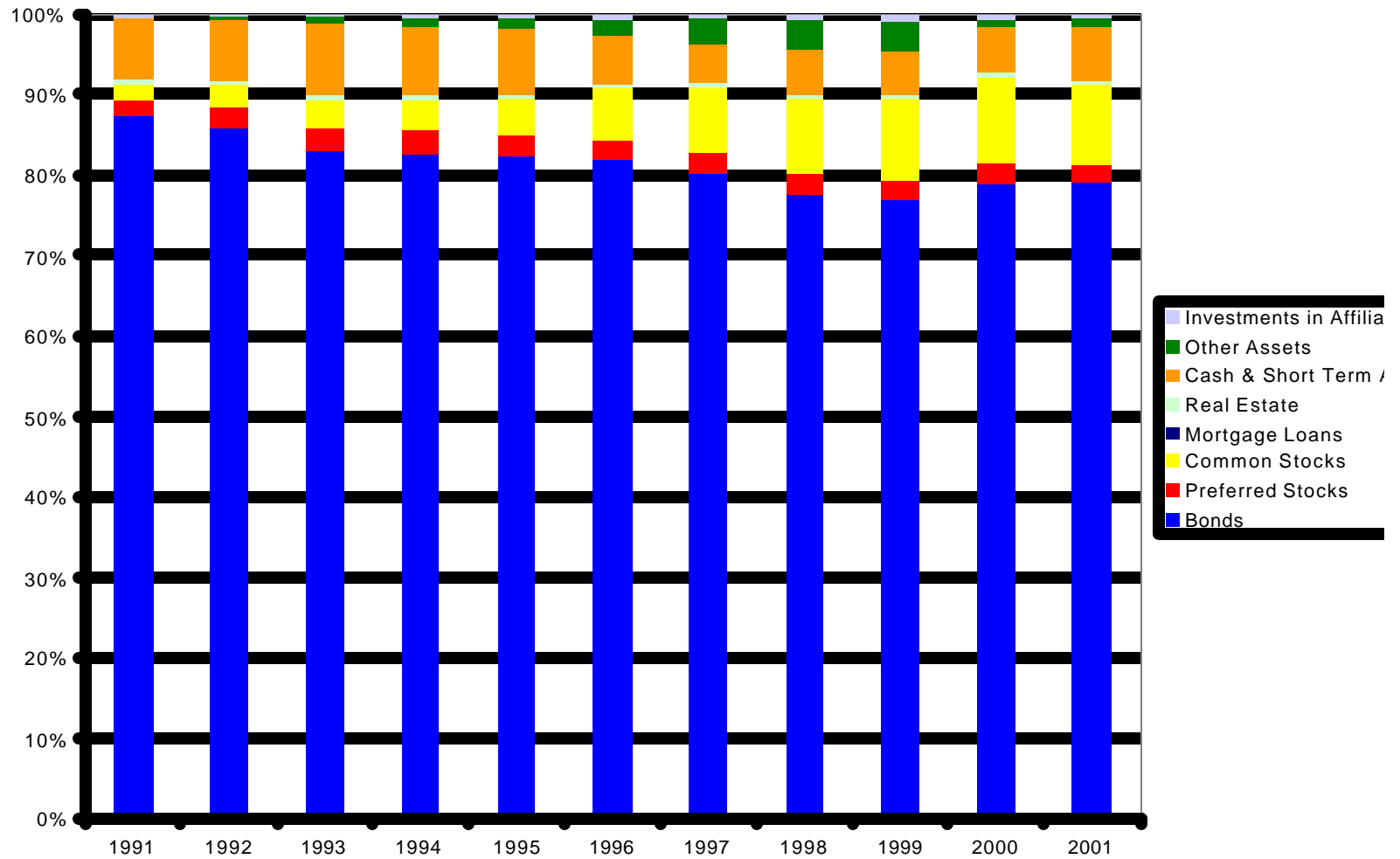
### Total Yield on Invested Assets

Source: Texas Department of Insurance Report to House Civil Practices Committee, 2/12/03



# Summary of Investable Assets Distribution: Medical Malpractice Predominating Companies in Texas

Source: Texas Department of Insurance Report to House Civil Practices Committee, 2/12/03



## Number of Payouts Reached by Verdict

Source: Texas Department of Insurance Closed Claims Data (1988-2000)

